

# iQUA™

# Quick Start Guide

## iQUA™ Quick Start Guide

Congratulations on purchasing your new water softener!

Track your water usage, receive alerts from excessive or continual water flow, manage your water softener, turn your home's water on and off with the optional shut off valve, and learn more about your product using the iQUA App. Available on the Apple App Store and Google Play Store.



See back for setup information, and visit [myiqua.com](http://myiqua.com) to learn more.



Shut Off  
Water



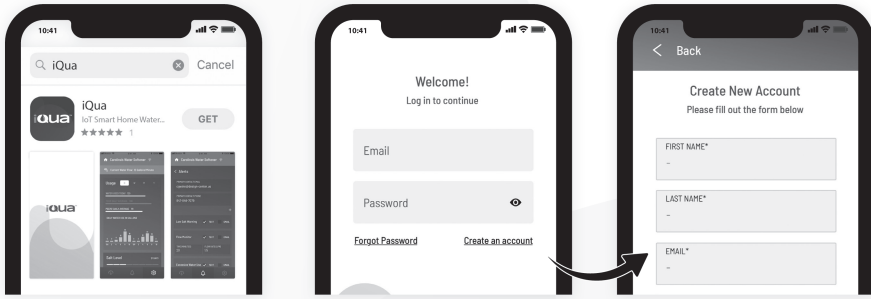
Track Water  
Usage



Receive and  
Manage Alerts



## 1 Download iQua and Create Account



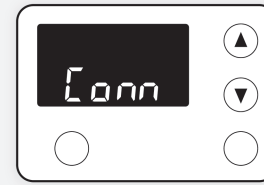
Start by downloading the iQua App from the Google Play Store or App Store.

Opening your new app will take you to a login/create account page.

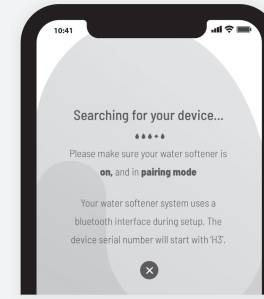
Complete form and agree to the terms and conditions and privacy policy. You will receive an activation email where you can complete activation process.

*Note: Email may go into your spam folder.*

## 2 Prepare to Connect App to Softener



Make sure your water softener is installed, plugged in and programmed, then put your water softener in bluetooth connection mode by pressing and holding the ▲ and ▼ buttons at the same time for three seconds. In connection mode, the light will flash amber for 15 minutes and the display will show Conn.



Log in to the app with credentials from step 1, and begin the connection process.

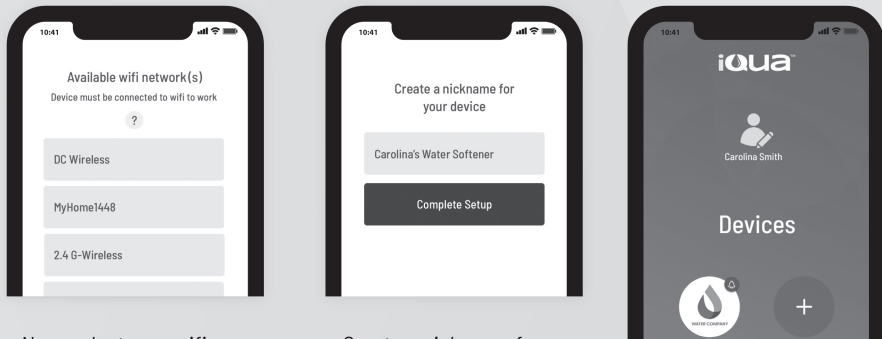
*Note: Your phone will require wifi, bluetooth, and location settings to be enabled for this step. Manage these in your phone settings.*



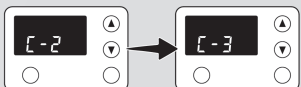
Tap the refresh icon until your water softener's serial number (an alphanumeric code beginning with "WCD") appears. Select your water softener, you will now see the display change to C1.



## 3 Complete Setup



Now, select your wifi network from the list of options and enter its password. Once you enter your network password correctly, display will change to C2, then C3:



Create a nickname for your new water softener, which can be changed later as desired.

Almost there! You should now be looking at a list of your water softeners. This page will act as your homepage in the app from now on. Select your newly connected softener to go into the dashboard.

## 4 Configure Your Settings



There are a few more settings to complete to make your iQua App work best for you. In the dashboard, navigate to Settings > Device Management.

Here you will be able to set your:

- Time zone (Display Units)
- Your alerts (Alerts)
- Your inlet water hardness and salt type (Device Settings)



Success! You can now track your softener.